



SNG is an innovative, modular, "off the shelf" and totally integrated software solution for Shipping Agencies.

Designed to fit any customer need.

Achievements:

Easy to use, flexible and powerful software.

Enhanced quality of the Shipping Agency's work and service.

Covering Export, Import and Container Control activities.

Goals:

Provide constant mapping of the Shipping real world.

Improve Shipping Agency's service efficiency.

Assure periodical technology upgrade.

Architecture:

Relational Database.

Client/Server application.

Independent modules.

Windows 32 bit application.

Technical Features:

Database independence: Data access via ODBC interface.

Server platform: Any computer with SQL Database and ODBC Driver (NT, UNIX, AS/400).

Client platform: Windows 95/98, NT Workstation

LAN/WAN environment.

Written in Visual Basic 32 bit.

ActiveX components for common core functions.

Outstanding Features:

Year 2000 compliant and Euro ready.

User and Group Application Security on Data access.

Multiple Shipping Companies. The Agency can set separate environment for each Shipping Company.

Completely configurable with Tables.

Automatic Freight & Charge computing.

Data Interchange with external applications (proprietary flat - file format and EDIFACT)

Database access with standard applications (MS Office, Internet browser via Windows NT + IIS)

Context-sensitive Help on-line.

Windows Graphic Interface.

Flexible settings.

User-friendly environment.

Benefits:

Profit/Cost rate monitoring.

Easy Data access for querying.

Typing reduction due to automatic data importing.

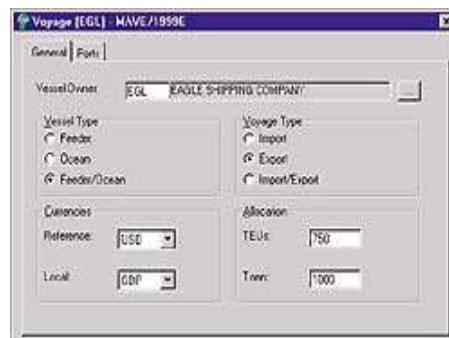
Human resources optimization and efficiency increased.

Modularity grants price flexibility for all sizes of agencies.

1. Table and Voyages Tables

SNG provides a large number of Configuration Tables to grant customization and high level of automation. Four category of Tables: General, Financial, Tariff and Containers.

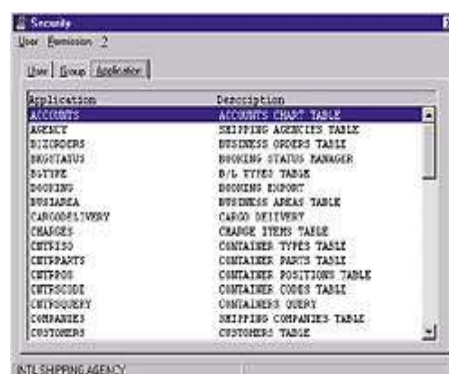
Voyages: The starting point of SNG activities. The main data handled are Vessel, Voyage, Allocation, ETA, ETD, Arrival Date, Departure Date, Export Closing Date and Time.



2. SNG Security

Allow the System Administrator to set, for every group of users, the specific application data access type. Four type of permission:

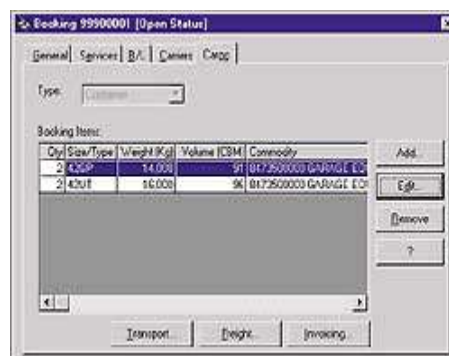
- No Permission
- Read Only
- Read and Write
- Read, Write and Delete



3. Booking

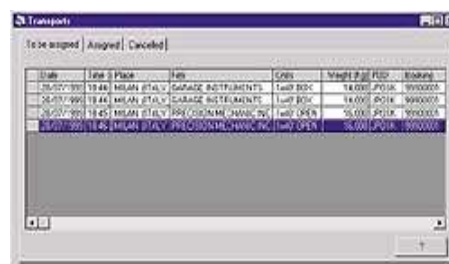
Core Application of Export management. A Booking is a set of containers that share data as Customer, Ports, Cargo, Voyage, Items. The main functions are:

- Data copying from previous Booking
- Automatic Charge Items and Invoice Items computing
- Data Verification
- Confirmation Document issuing



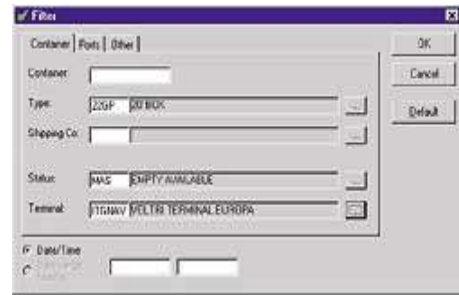
4. Export Logistics

Inland haulage management for container stuffing. Haulage orders. Booking progress updating. Statistics by Voyage and period. Data interchange with Forwarders and Transport companies applications. Cost controlling and statistics.



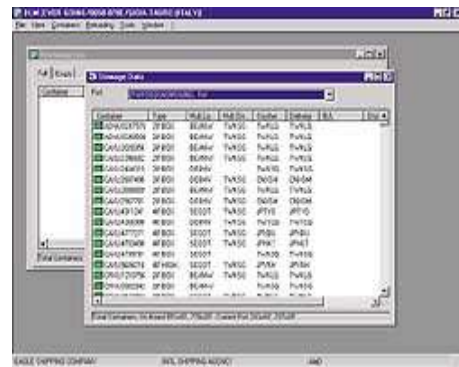
5. EQCS Equipment Control System

A complete Equipment Control application to trace all Containers activities. User-defined Container Status. Empty Containers for Stuffing management. Inventory and Leasing Data recording. Powerful query function. EQCS includes THMS (Terminal Handling Management System) which is a stand-alone application for Container Terminals.



6. DLM Discharge/Loading Manager

Containers Discharge and Loading forecast. Discharge and Loading List management of Full and Empty Containers. Transshipment and Feeder. Stowage Data management.



7. Damaged Manager

Damaged Container Estimates. Authorization and Repair management. Repairs Shops Price List. Authorization Data interchange. Interaction and integration with EQCS.

